



# CNIV 2017

## « 2<sup>ÈME</sup> CONGRÈS NATIONAL D'IMAGERIE DU VIVANT »

8 - 9 NOVEMBRE 2017 – INSTITUT PASTEUR (PARIS)



IMSTAR PATHFINDER™ PIONEER IN AUTOMATED CELL ANALYSIS SYSTEMS

FRANÇOISE SOUSSALINE, PRESIDENT CEO

E-MAIL: [FRANCOISE.SOUSSALINE@IMSTARSA.COM](mailto:FRANCOISE.SOUSSALINE@IMSTARSA.COM)





# ABOUT IMSTAR



## Corporate in brief

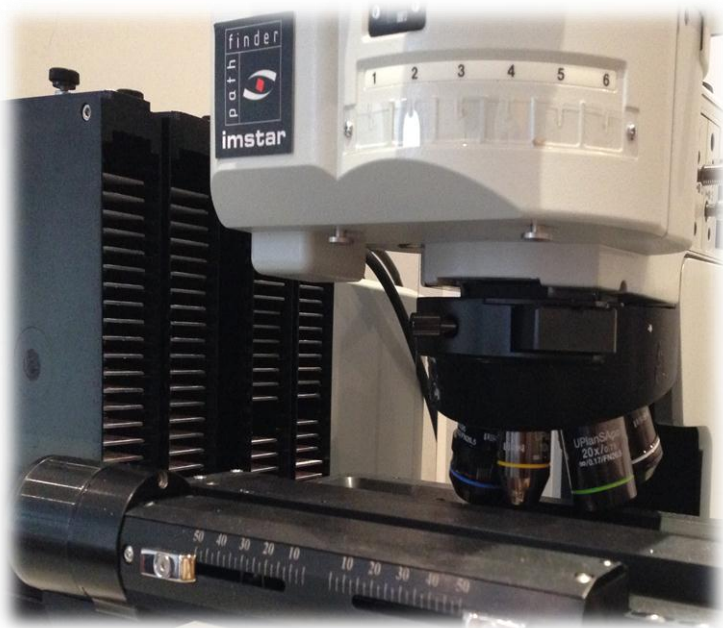
- **Spin-off of the CEA/SHFJ** Life Sciences Division, founded by F. Soussaline, SPECT-PET Functional Imaging Group.
- **Lean, flexible & multidisciplinary team.** MDs and PhD Scientists shareholders. Cumulated know-how in digital cell imaging representing > 150 year-man.
- **Expertise:** Information-dependent, *not Operator-dependent Imaging-Analytical Data*, addressing different markets: Health Technologies R&D, Pharma, Biotech, Nutrition, Cosmetics, Tobacco Industries.
- **International Network:** over 100 Academic Institutions; **8 collaborative R&D** EU Frame Programs, ITEA EUREKA and 4 French consortia; 15 partnerships; 180 scientific articles.
- **Intellectual Property:** 13 issued patents, 150 copyrights and 15 trademarks.
- **Global base in KOLs' public/private Labs:** Cytogenetic, Cyto-Pathology, Genetic Toxicology. Worldwide market of ~1000 Software series in Europe, America and Asia (50% in China).



# PATHFINDER™ PRODUCTS RANGE



**Our goal :** To provide high performance, proven, versatile, Quantitative Cell Imaging systems, integrating a software library in comprehensive Solutions for BioMedical Research, Biomarkers' test development, Molecular Cytogenetic, Genetic Toxicology, and assistance to *ex vivo* diagnostic.



Pathfinder™ Workstation  
Automation of standard/well slides  
Network of Analysis software station(s)

**Solutions for reliable tests:** A range of hardware & software configurations combining specific modules adapted to a range of applications.

**Innovative Applications:** Automated Biomarkers' tests using validated Cellular High-Content Phenotype Analysis, eventually combined with *in vivo* Imaging and clinical data.

## Pathfinder™ technology:

- Selected components for a multimodality (BF, IF, FISH) motorized photon microscope, high precision 3D scanning, large field high-resolution CCD and 160-slides' loader robot.
- Customized Software Protocols (dedicated proprietary algorithms) for automated scanning, fast parallel image processing & analysis of a variety of sample format.

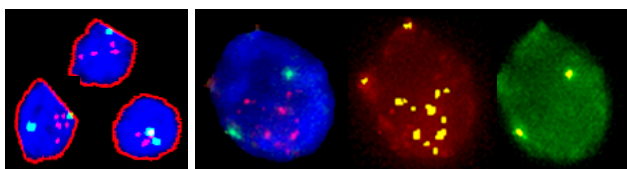


# TUMOR MARKER ASSESMENT

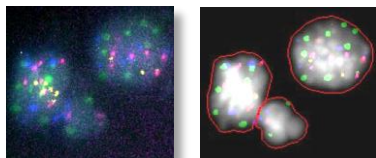
Focus on Applications for Personalized Medicine



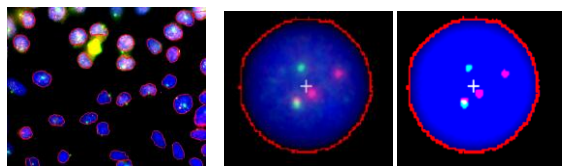
Cellular Biomarker tests using IHC, IF, FISH, M-FISH, DNA staining, polyploidy ...)  
Standardized Sample Procedures and Customized Cells' Data Analytics



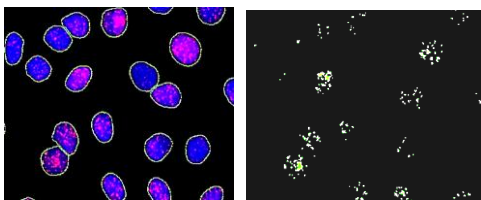
**Her2 Breast cancer:** Tissue & Cytology



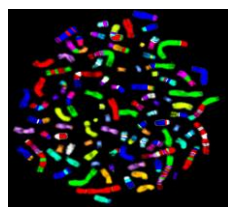
**Bladder cancer M-FISH**  
(Abbott UroVision® probes)



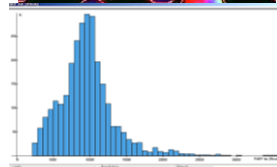
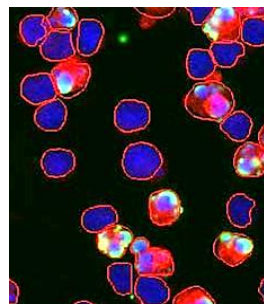
**AML Bcr-Abl fusion** (3D-colocalization)



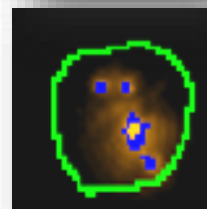
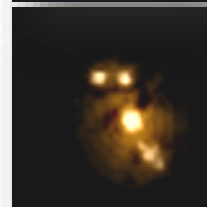
**γH2AX** Q-phosphorylation signals



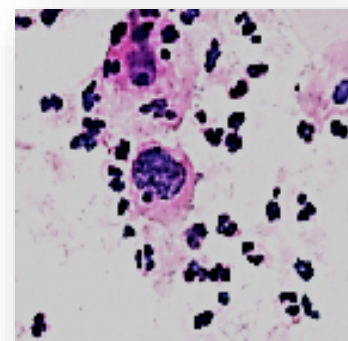
**Sarcoma (M-FISH)**  
chromosomes  
rearrangement



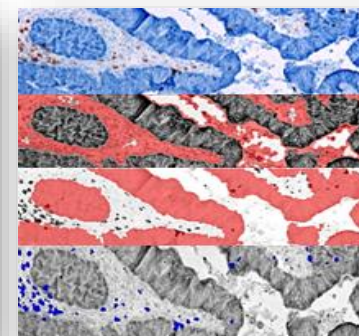
**Breast cancer**  
apoptosis  
quantification  
(PARP-TUNEL)



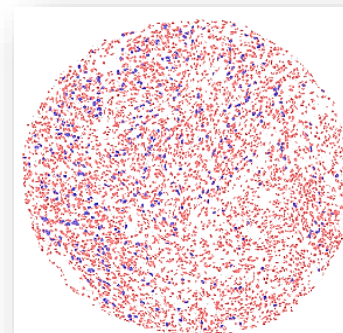
**Lung cancer : CTCs**  
automated detection  
& ploidy classification  
(specific FISH probes)



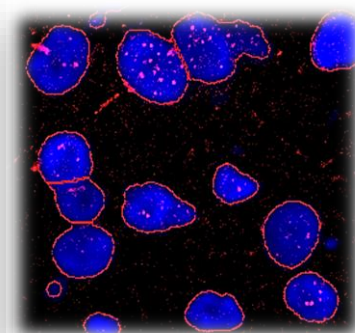
**HSIL cells in cervical LBC**  
Automated detection



**Colon tumor:** ROIs &  
Immune infiltration %



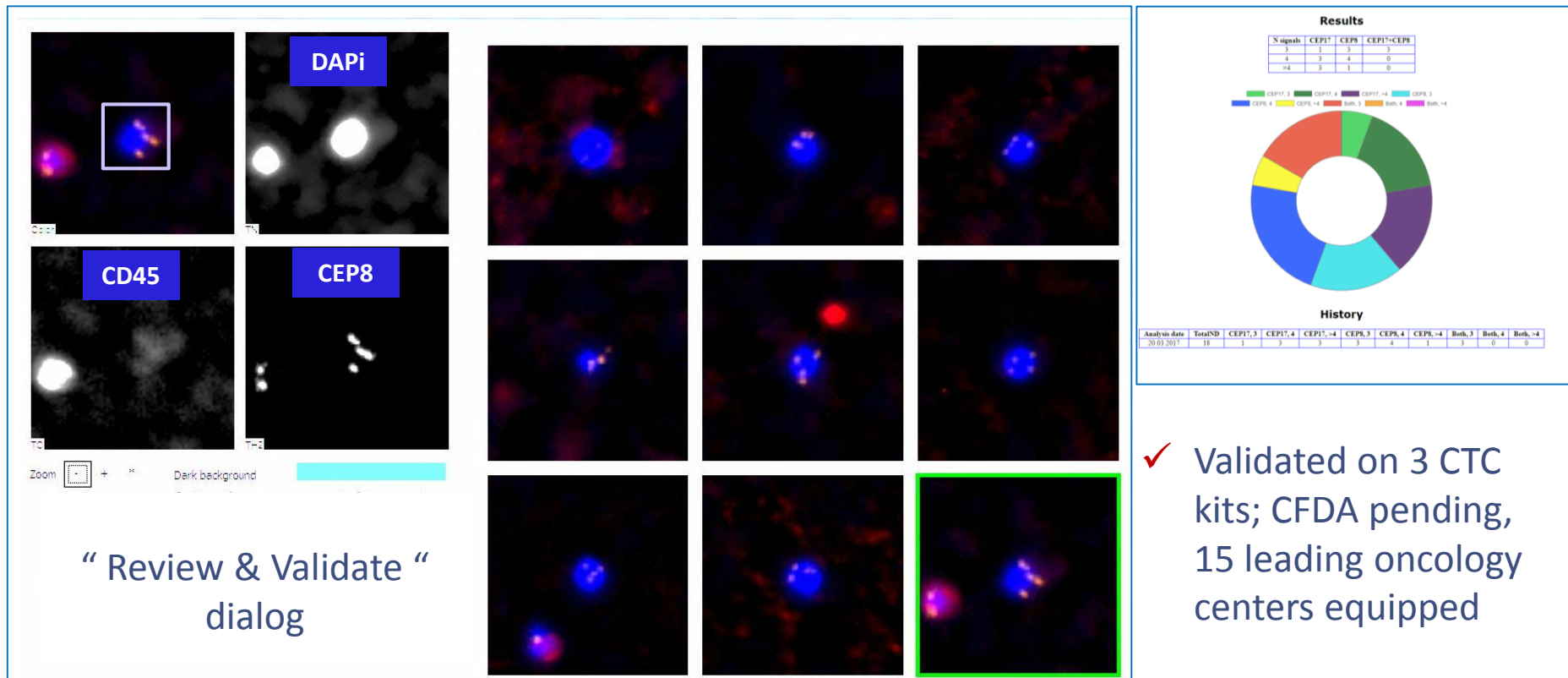
**Prostate tumor TMA**  
Proliferation Index (Ki67)



**Hepatoma: Telomerase**  
activity assessment



# CTC : Assisted Digital Quantitative Cytology



✓ Validated on 3 CTC kits; CFDA pending, 15 leading oncology centers equipped

## CTCs' detection, counting and classification

- High sensitivity (98%) and specificity (85%)
- Customized Software Protocol modules adapted to commercial kits (blood sampling, enrichment, markers & probes)

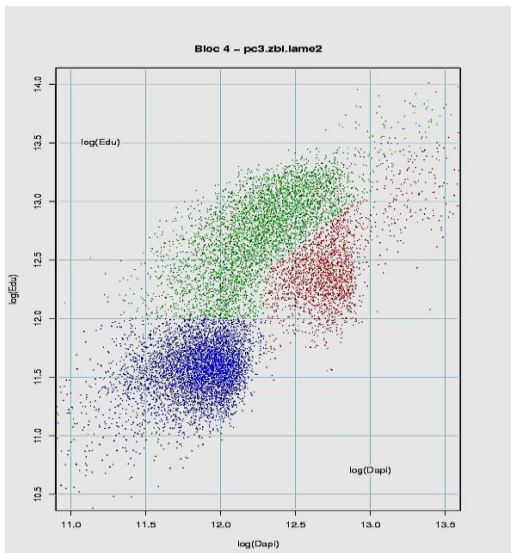
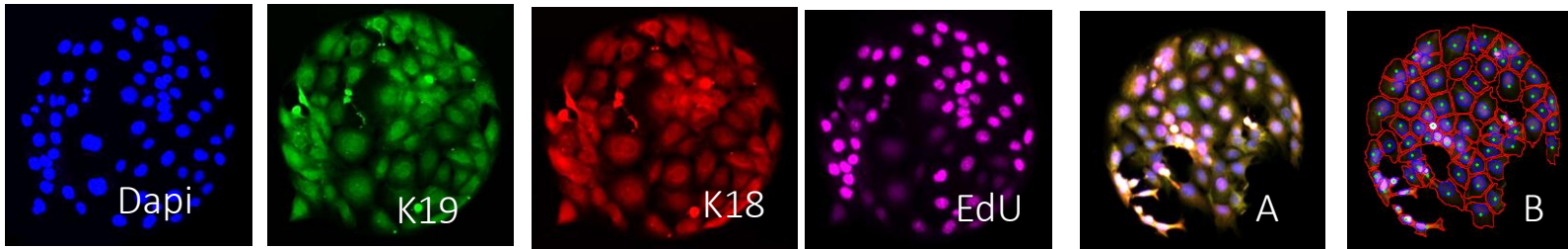


# Smart Solution for Rare and abnormal Cell characterization



Our extensive library of validated software protocols allows a variety of markers assays covering the whole spectrum of Life Sciences R&D

## Multiplex Protein Quantification



Phenotype Screening of siRNA cell-microarray using Pathfinder High-Content Imaging for multiplex study of kinase inhibition effect on 4 prostate (here PNT2) cell lines and primary cells' differentiation, proliferation, and viability variations.

A - Merge of multimodalities images of 4 fluorescent dyes

B - Individual cells segmentation and phenotypes distribution' Analysis

BIOTYPE is a DGE/Territories FUI 2 funded Project, led by IMSTAR, labeled by MEDICEN Paris Region. Collaboration with CEA/LSD, Dr. Xavier Gidrol





# DISCRIMINATIVE ADVANTAGES



## **The Pathfinder technology and its products range is characterized by:**

- Applications versatility thanks to Scanning versatility and Library of proprietary algorithms.
- Accuracy, Sensitivity, Specificity... closest to Cyto-pathologist's eyes (“Golden Standard”) for multiplex biomarker identification, validation & standardization.
- Gain of 10 to 20-fold in terms of total process' time and workflow's cost efficiency.
- Up-scalable image-data analysis for automated scoring & interpretation with all benefits of flow cytometry.
- Regular upgrades. New developments take advantage from customers' global base.
- Compliancy with International SOPs and OECD guidelines. Integrated Image Database Management (US Patent n° 7,379,578).
- Unique «Review & Validate» interface for effective interpretation of selected abnormal/rare cells.
- Adaptability to User's timeline : Reactivity, customization and tailored project management.



# DOMAIN OF EXPERTISE AND OFFER



## Quantitative Cell imaging for tumor markers tests

- **Precision Medicine** : Assistance to earlier diagnostic, prognosis or treatment management in oncology, by *in situ* cells' fine characterization, cellular/molecular biomarkers validation, phenotype *ex vivo* assessment and CTCs detection & scoring.
- **Predictive Health**: DNA damage evaluation, e.g. Micro-Nucleus, Comet, and H2AX expression assays, in Genetic Instability, cancer studies and Genotoxicity for Biomonitoring.

## IMSTAR Offers Systems / Services

- Co-development or sub-contracting in large scale phenotype screening tools and *ex vivo* assisted diagnostic (may be combined with *in vivo* imaging).
- Tumor cells and Regions-of-Interest recognition and characterization in Digital Cyto-Pathology (cells spread, liquid biopsy, tissue sections). Dramatic assistance to the Biologist, Oncologist, Pathologist/technician for robust, faster interpretation.
- Highly-parallel sample (e.g. cell-arrays) testing for higher throughput.
- Virtual and distant imaging functionalities (expertise sharing).

Pathfinder™ fully automated workstation is intended for use as a tool for the scientist, biologist, pathologist in the detection, classification and counting of cells of interest based on morphology, phenotype, structure or organization. All cytology/histology modules are used as an assistance in diagnostic.

All other applications are for Research Use Only\*.



# IMSTAR Expertise



## Some reference customers & partners



## THANK YOU FOR ATTENTION!

**Contact : Françoise SOUSSALINE**

e-mail: [francoise.soussaline@imstarsa.com](mailto:francoise.soussaline@imstarsa.com)

IMSTAR S.A. 93 Boulevard Arago 75014 Paris, France

Phone +33 (0) 1 42 34 93 77 – Cell +33 (0) 6 15 06 51 53

[www.imstarsa.com](http://www.imstarsa.com)